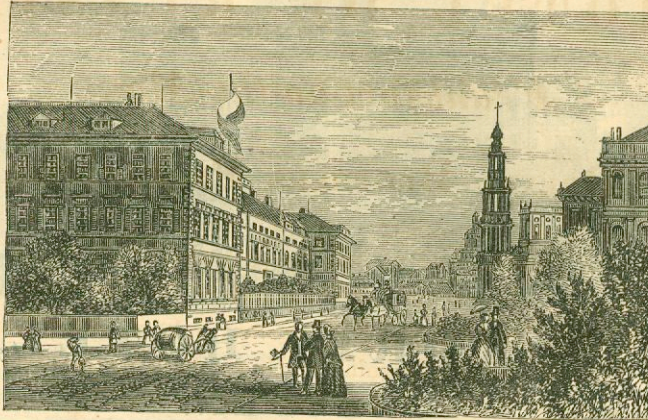


**HOTEL DE BELLEVIEU,**  
Dresden,



Messrs. **KAYSER & FRANKE**, Proprietors.

This fine large Establishment, situated on the banks of the Elbe, between the two beautiful bridges, facing the Theatre, the Museum, and Catholic Cathedral, adjoining the Brussels Terrace, and opposite the Royal Palace and Green Vault, contains One Hundred Front Rooms. These Apartments combine Elegance and Comfort, and most of them fronting either the Theatre Square, or public Walks and Gardens of the Hotel, command fine views of the River, Bridges, and distant Mountains. The Gardens of the Hotel afford its Guests an agreeable and private Promenade. Table d'Hote at one and five o'clock. Private dinners at any hour. To families or single persons desirous of taking apartments for the winter, very advantageous arrangements will be offered, and every effort made to render their residence in the Hotel pleasant and comfortable.

W. Pembroke Fetridge, *Harper's Hand-Book for Travelers in Europe and The East*, Harper & Brothers, New York, 1870.